

# Accelerating Software Quality for Enterprises Intelligently



QMetry Test Management enables software testing teams of enterprises across the world to shift left the software quality.

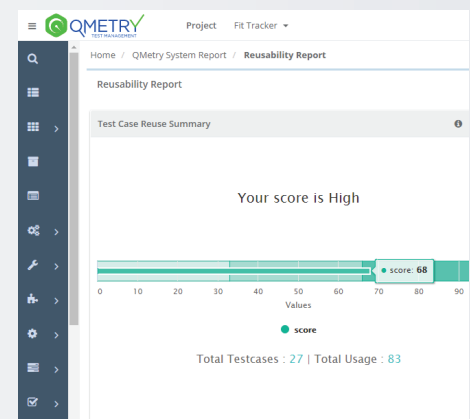
Considered one of the best test management tools, QMetry Test Management offers test case authoring, reusable test cases, test execution, 140+ reports including deep traceability and test case coverage reports with customization options, seamless integrations with Jira, CI/CD tools like Bamboo/Jenkins, and Automation frameworks. It is a scalable, secured and modular tool that offers features like e-signature specifically designed for large compliance driven enterprises. With built-in exploratory testing, QMetry Test Management offers smart and automated documentation for your test cases.

With QBot feature, QMetry brings in the power of AI where you can make your testing efficient by eliminating the duplicate test assets and thereby increase the reusability. With Agile Friendly design and folder structure enablement, it is well-suited for traditional and Agile teams or teams that are in transition.

## Core Features

### ✓ Enabling Agile

QMetry Test Management offers cloud and on-premise test management tool for Agile / DevOps teams. With QMetry, software testing teams can plan test cycles based on requirements, test early and frequently to shift the quality left. With reusable test assets, collaborative functions to assign/reassign test cases and integration with tools like Jira, QMetry ensures shared ownership of quality across development and QA teams. From test creation to execution to quality analytics, QMetry offers comprehensive test management.



## ✓ Achieve Continuous Testing

QMetry Test Management has deep integration with Source Code Repository such as Bitbucket, SVN, Git, GitLab and CI/CD tools such as Jenkins, Bamboo and Maven to support continuous testing in the pipeline. As soon as new code is committed by the developers, automated tests are performed throughout CI/CD pipeline which are then monitored in QMetry. This helps the team to view the feedback early, allowing them to resolve defects early. QMetry ensures feedback loops with actionable insights through customizable dashboards, reports as well as visual analytics.

Key: **BD**

Enable Rich Text: ☒ Add in LDAP/S

Description: Support team - Demo Project

Default Resolved Status: **None**

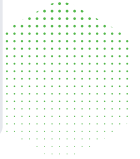
QMetry Default Resolved Status: **Resolved** **Closed**

Release/Cycle Users Jira Integration BDD Configuration

Filter

Version Control	Repository
BITBUCKET	https://qtmuser123@bitbucket.org/is_co

1 - 1 of 1



QMetry Screenshot showing a test run for 'Calculator Automated Run #44'. The test case is 'FT-TC-367' with the description 'Add two numbers'. The test case summary shows 'Add two numbers' and 'Version: 16'. The test case is 'FT-TC-255' with the description 'Add two numbers (2 + 3)' and 'Version: 2'. The test case steps are:

Step No	Step Description	Input Data	Expected Outcome
1	I have a calculator		
2	I add 2 and 3		
3	the result should be 5		

## ✓ Test Automation for Next Generation

Teams practicing BDD can author, store and sync features files directly to/from Version Control Systems like SVN, Git, GitLab and Bitbucket, using the built-in Gherkin editor in QMetry requirements. The two-way syncing between QMetry & VCS keeps developers, testers and product owners up-to-date with the source code commits and automated step definitions. Using QMetry automation agents, test executions are triggered directly from QMetry, storing results in Test Suite. This ensures complete traceability with requirements.

## ✓ Integration to enable CI/CD

QMetry provides seamless integration with different tools that are part of the CI/CD orchestration. QMetry offers — Importing/ syncing user stories with Jira Integration; Support for DevOps & Agile by providing integration for Jenkins, Bamboo, Maven, Gradle; Integration with Test Automation Framework tools such as Selenium, Cucumber, TestNG, JUnit, HP UFT, Robot, QAS; Syncing issues with Defects Management tools such as Jira, Rally and Azure DevOps.

### QMetry Test Management for Bamboo configuration

Task description

upload file

☐ Disable this task

QMetry Base URL\*

https://testmanagement.qmetry.com/

Example: https://testmanagement.qmetry.com/test/import/createandscheduletestresults/

Automation API Key\*

0F0DSHRLU7YUQ3a7L2qQUuYU5VHa4VwIG5i2Kld

Test Result File or Directory Path\*

/home/ec2-user/cucumber.json

Format

cucumber/json

cucumber/json

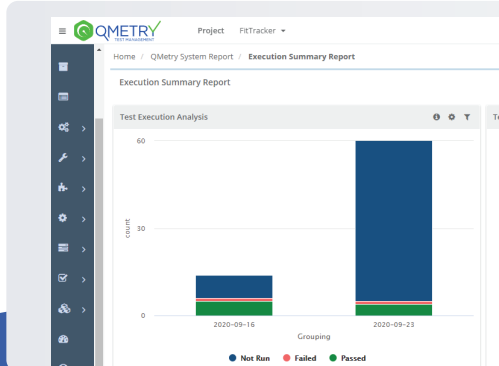
testing/xml

junit/xml

qas/json

hpuft/xml

robot/xml



## ✓ Effective Quality Analytics

QMetry Analytics offers real-time visibility for test quality across projects and teams through reports providing actionable insights. Requirement report shows the test coverage; Issue Report and execution report show issue analysis with trend and execution per release respectively. The Reusability Report boosts the efficiency of testing team with traceability, reusability and visible linkages with other test assets. The Traceability Report provides the trail of Requirements - Test Cases - Issues.

## Benefits



Scalable,  
Secured and  
Modular tool



Improved  
Reusability with  
Reuse of Test Cases



End to End  
Traceability from  
Stories to Issues



Seamless  
Integration with  
Jira, CI/CD tools



Smart & Automated  
Documentation with  
Exploratory Testing



Audit and  
Compliance  
Supported