



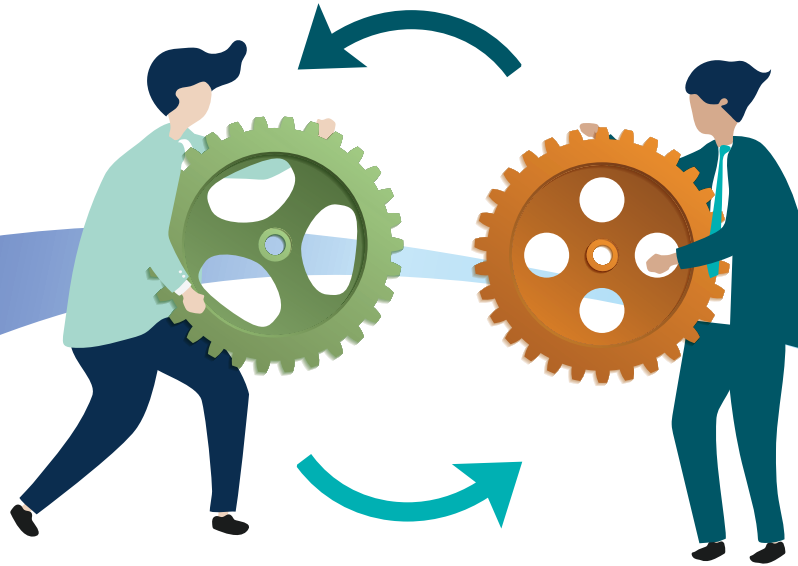
# Migrate from Zephyr Enterprise to QMetry Test Management



## Overview

As a digital quality platform, QMetry knows the importance of being agile to keep up with market trends and customer demands. QMetry Test Management is an end-to-end test management tool with features such as exploratory testing, versioning and advanced reporting. If you are struggling with Zephyr Enterprise and wish to migrate to a better testing experience and scale up to continuous testing, then QMetry is the most viable solution. QMetry offers excellent migration support and a migration utility that seamlessly transfers your test assets and data from one tool to another.

# Our approach



## Discovery sessions

Migration process kicks off with discovery sessions with various groups such as TCoE, Automation, PMO, KPI reporting stakeholders to understand the key requirements and organizational-specific needs. We then carry out a detailed analysis of their tool dependency and usage.



## Project Scope

QMetry's migration team members analyse the scope, requirements, and business objectives for your Zephyr to QMetry transition. Here, we meet stakeholders and try to purge all the unnecessary and duplicate assets that are not required.



## Define Migration Strategy

To ensure a seamless and pain free migration, we lay out the migration pre-requisites and configuration plan. Our plan includes the mapping of relevant test assets, integrations, reports and dependencies. Also, based on client's requirements, clients can either use Migration API or Migration Utility to carry out the successful migration.



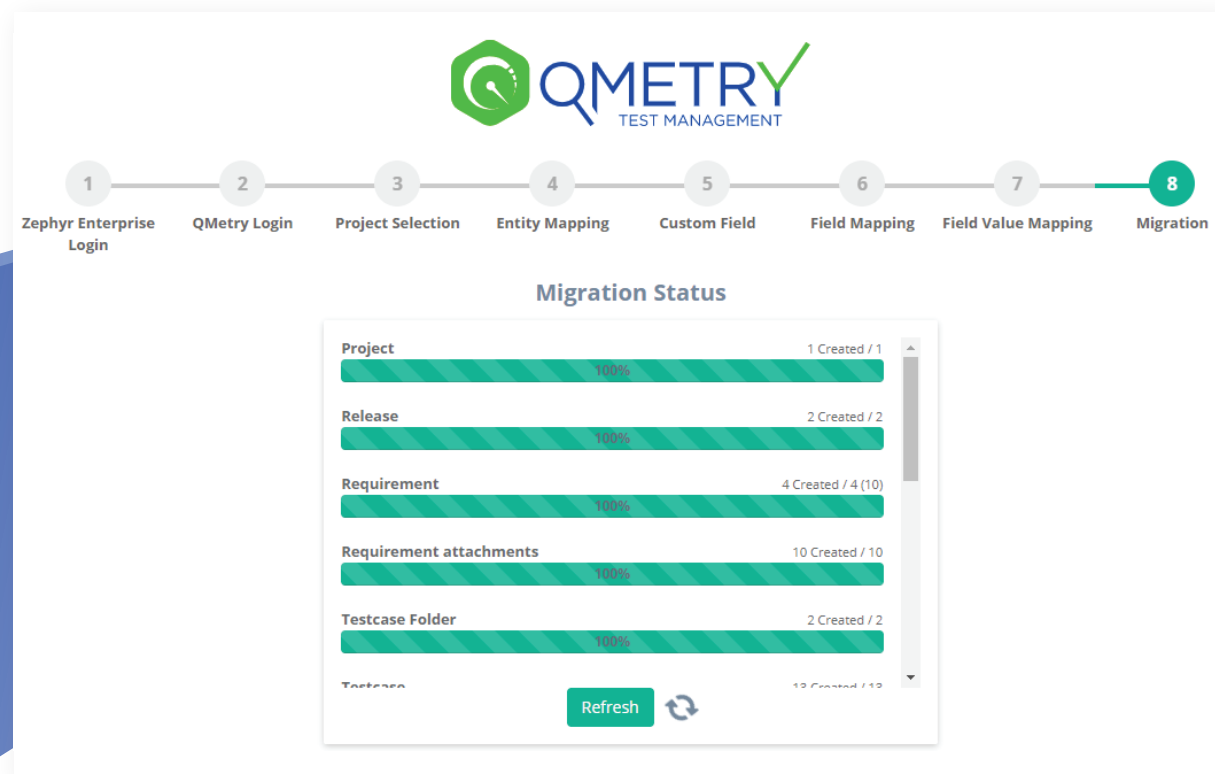
## POC Migration

We then configure the projects in QMetry with the required degree of customization and identify the apps that are required for the migration. Once this is done, we will create different types of test assets to validate the configuration. After configuration, we export data from Zephyr to QMetry using our utility and validate the migration. We follow this with UAT and production implementation.



## Post Migration Training and Support

After the migration has been validated, we conduct QMetry user onboarding training session for team members. We also check the proof of concept with a 'first project' adoption and report validation followed by other projects.



Migration between test management tools can be a tricky process if you do not have the right tools and processes. Organizations are somewhat hesitant to kick off migration tasks because it can be time and labour intensive with efficiency loss, if not carried out correctly. Hence, we have developed a desktop-based migration utility to ensure you can easily make the transition with minimum downtime and maximum portability. We have developed this utility keeping in mind that this tool is easy to use with simple interface that takes users through each step one at a time that is required for migrating data from Zephyr to QMetry.

### Scope of Migration includes

#### Zephyr Assets

- Requirements
- Test Cases
- Test Cycles
- Test Execution
- Defect

#### QMetry Assets

- Test Case
- Test Step
- Test Run
- Execution Status (As in Configuration page)
- Issues

## Test Assets that are migrated

- ✓ **ALL VERSIONS** of the Requirements and Tests
- ✓ **RICH TEXT** in Test case description, Test Steps, 'text/long' text type custom fields
- ✓ **TEST DATA** in Test Steps, Test Sets, Test Executions, Defects
- ✓ Migrates **CUSTOM** and **SYSTEM FIELDS** by auto mapping in field mapping
- ✓ Entire **FOLDER** structure
- ✓ **COMMENTS** for all the assets
- ✓ **LINKAGES** between assets
- ✓ For test cases '**CREATED DATE**' will be migrated to QTM's system field
- ✓ All **ATTACHMENTS & URL** links
- ✓ **TAGS** can be migrated as Labels

## Benefits

"If your system can't support your business needs and it is not evolving then it must retire"

 Proven migration experience for Enterprise Clients	 Free Migration Consultation
 Ready-made Migration Utility	 Dedicated Support Team for Migration
 Post Migration Training & Support	

## Free Consultation

Learn more about QMetry Test Management and how this migration will help your testing goals by scheduling a consulting session with QMetry's expert team at no cost.

[Sign Up for Free Consultation](#)

\* All logos/trademarks/product names used in this document belongs to their respective owner. Information represented here is based on the general information available on the internet and public sources.